

REVISIONS				
ECN	REV.	DESCRIPTION	DATE	APP'D
1001	O	UPDATE TO AQ-MATIC & VERIFIED PART NUMBERS	01/16/17	MGS
1507	P	LOGO UPDATE, REMOVE BR FROM DRW #, FIX MINOR ERRORS, ADD TORQUE TABLE	05/02/19	KJB
1964	R	CATALOG SHEET UPDATE / REPLACE SHAFT 1077854	11/1/21	TRK/SMH

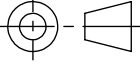
NORMALLY OPEN W/ SPRING ASSIST				
ITEM NO.	DESCRIPTION		PART NUMBER	QTY.
1	BODY, 520, VALVE	NORYL	1074943	1
2	SCREW, DISC, PLATE, 520	NORYL	1077903	1
3	DISC	EPDM	1074966 (520-J)	1
		BUTYL	1074967 (520-JJ)	
		FKM	1074968 (520-DJK)	
4	SHAFT, 520, NORMALLY OPEN	NORYL	1077854	1
5	GUIDE, SHAFT, 520, NORYL	NORYL	1074964 (520-GN)	1
6	O-RING, 2-111	EPDM	1071727 (ORE-111)	1
		BUTYL	1071764 (ORJ-111)	
		FKM	1071799 (ORV-111)	
7	O-RING 2-112	EPDM	1071717 (ORE-112)	1
		FKM	1071787 (ORV-112)	
8	DIAPHRAGM	BUNA	1078035 (520-FB)	1
		FKM	1078047 (520-FV)	
9	O-RING, 2-030	EPDM	3015801 (ORE-030)	1
10	PLATE, DIAPHRAGM, 520,LWR	NORYL	1077858	1
11	PLATE, DIAPHRAGM, 520, UPPER	NORYL	1077856	1
12	CAP, VALVE 520	NORYL	1074948 (520-BOK)	1
13	SCREW, 10-32 X 5/8",RND HD	SS	1072379 (SCS-0094)	6
14	O-RING, 2-018	EPDM	1071720 (ORE-018)	1
		BUTYL	1071762 (ORJ-018)	
		FKM	1071790 (ORV-018)	
15	SCREW, CUTTING 1/4" TYPE BT	SS	1077781	1
16	NUT, HEX, 10-32, 18-8SS, 5/16	SS	1071647 (NUS-0005)	6
17	SPRING, COMPRESSION	SS	1074982	1
18	O-RING, 2-007	FKM	41122-01 (ORV-007)	1

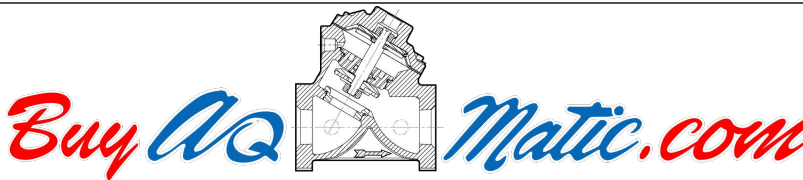
REPAIR PARTS KIT		
DESCRIPTION	PART NO.	
DIAPHRAGM & SEAL KIT	1081784 (520-RAN) E.P.D.M. INCLUDES DIAPHRAGM 1078035	1081783 (520-RAJN) BUTYL INCLUDES DIAPHRAGM 1078035
	1081787 (520-RAVN) FKM INCLUDES DIAPHRAGM 1078035	1081786 (520-RAVFN) FKM INCLUDES DIAPHRAGM 1078047
INT. PART KIT (NORM. OPEN) CONSISTS OF ITEM NO'S 2,4,5,10,11,15	1079600 (K520-RFN)	

THE COMPONENT, PART, OR ASSEMBLY DESCRIBED IN THIS DOCUMENT MUST COMPLY WITH THE EU (EUROPEAN UNION) DIRECTIVE:
RoHS DIRECTIVE 2011/65/EC.

THIS DOCUMENT IS SOLELY THE PROPERTY OF AQ-MATIC
REPRODUCTION, USE DISCLOSURE, OR
TRANSMISSION OF THIS DOCUMENT OR DETAILS CONTAINED
HEREIN, IN PART OR IN WHOLE, IS PROHIBITED WITHOUT
THE WRITTEN CONSENT OF AQ-MATIC ENGINEERING. THIS
DOCUMENT AND ANY COPIES SHALL BE
RETURNED TO AQ-MATIC UPON WRITTEN
REQUEST.

DO NOT SCALE DRAWING. DIMS. ARE IN INCHES [mm]
INTERPRET DIMS AND TOLERANCES PER ASME Y14.5M -1994
UNLESS OTHERWISE SPECIFIED:
CORNER FILLETS R.005-.020 [.127-.508]
TOLERANCES:
ANGLES: ± 1°
1 PLACE .X: ± .100 [2.54]
2 PLACE .XX: ± .010 [0.25]
3 PLACE .XXX: ± .005 [0.13]

THIRD ANGLE PROJECTION	
APPROVALS	DATE
DRAWN TRK	11/1/21
CHECKED BY	
APPROVED	

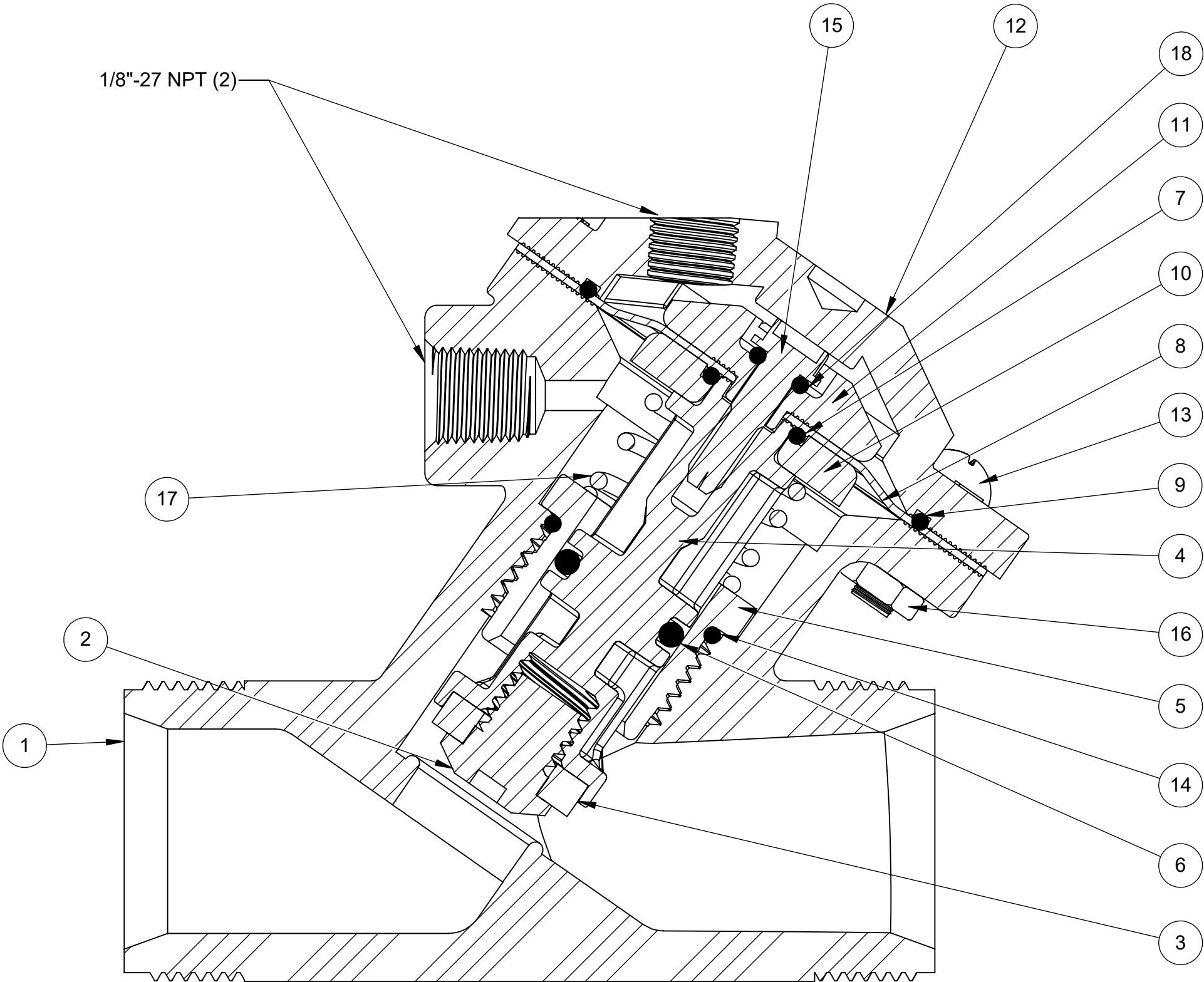
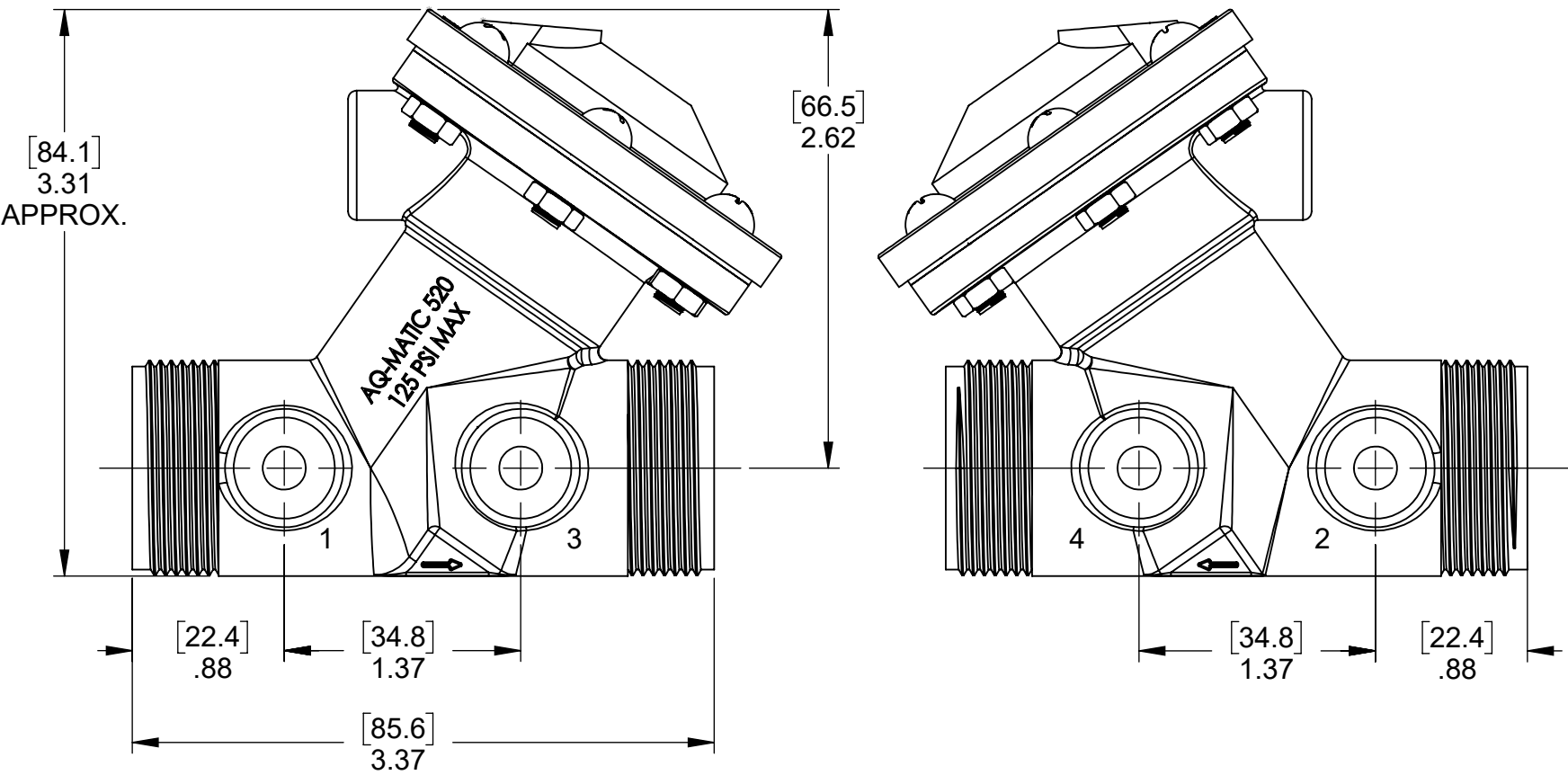


CATALOG SHEET, 520, VALVE
STANDARD MODEL

SIZE C	DWG NO. 1078139	REV. R
SCALE 1:2	SOLIDWORKS FORMAT	SHEET 1 OF 2

ASSEMBLY TOOLS	
DESCRIPTION	PART NO.
FOR INSTALLATION & REMOVAL OF SHAFT GUIDE (ITEM #5)	1074989 (520-Z)
TO HOLD SHAFT (ITEM #4) DURING ASSEMBLY/DISASSEMBLY	1077834

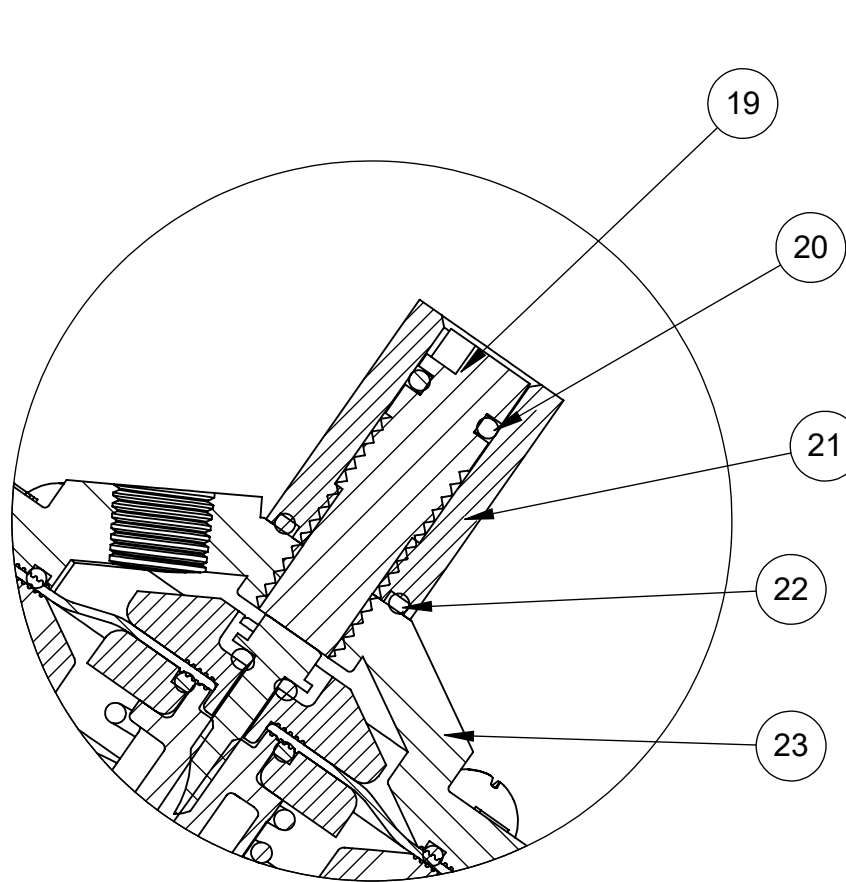
TORQUE TABLE		
ITEM #	DESCRIPTION	TORQUED TO (+/- 10%)
2	SCREW, PLATE, DISC	8 IN-LB
5	GUIDE, SHAFT	32 IN-LB
13 & 16	CA P SCREW & NUT	30 IN-LB
15	SCREW, CUTTING	15 IN-LB



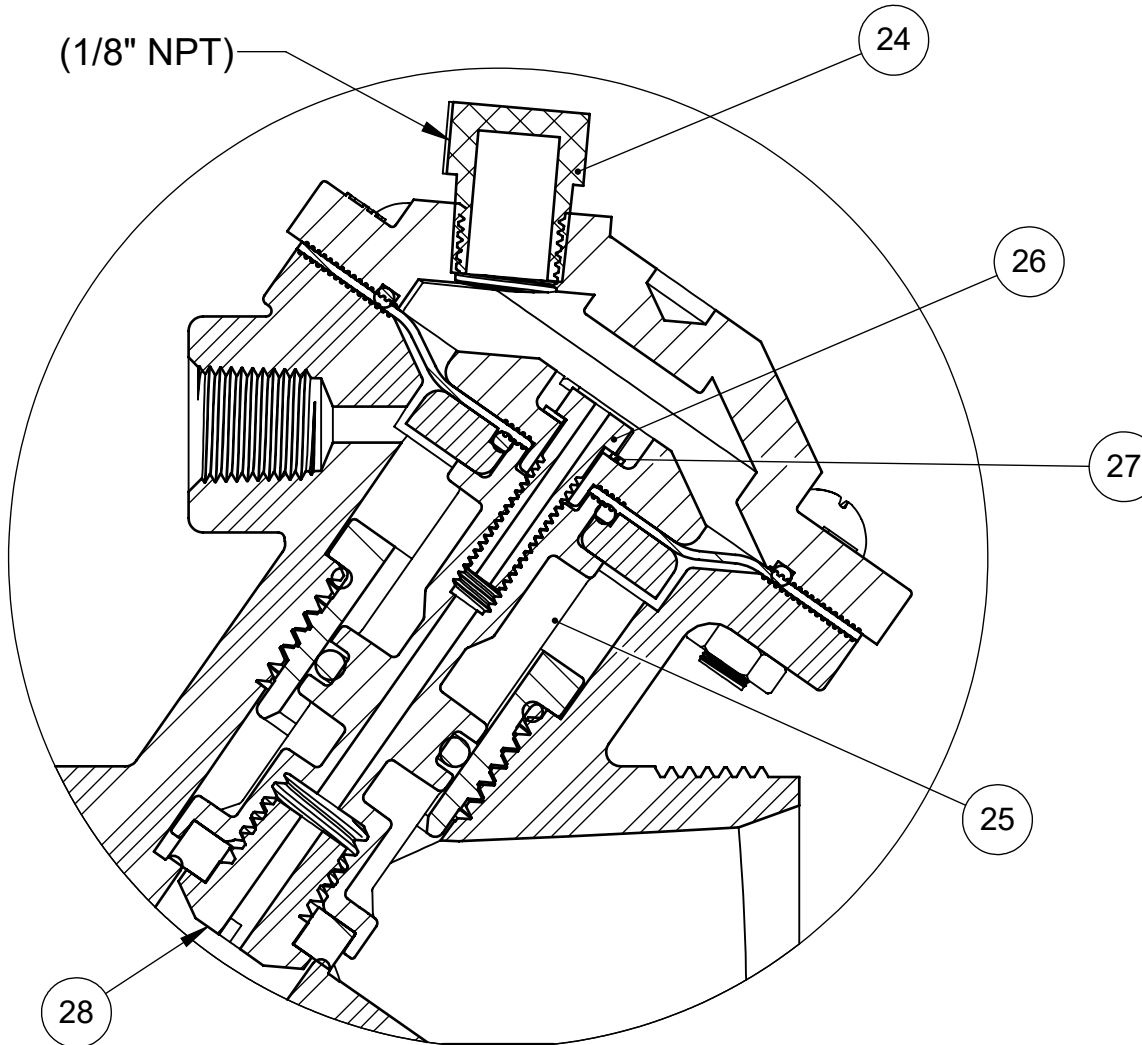
1070140 (K520-X201-14000)
NORMALLY OPEN W/ SPRING ASSIST OPEN (STANDARD)

- SEE DRAWING 1081309 FOR UNION END CONNECTORS & GROOVED ADAPTORS
- SEE SHEET 2 FOR CONFIGURATION OPTIONS

D

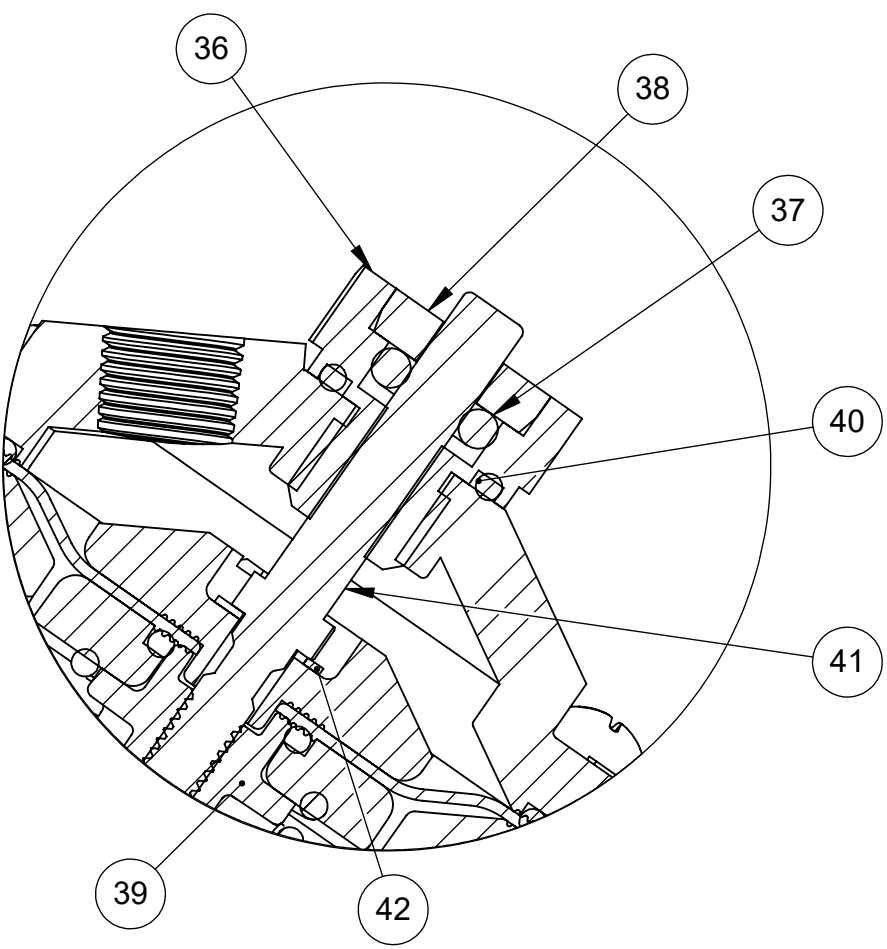


1070141 (K520-X211-14000)
LIMIT STOP



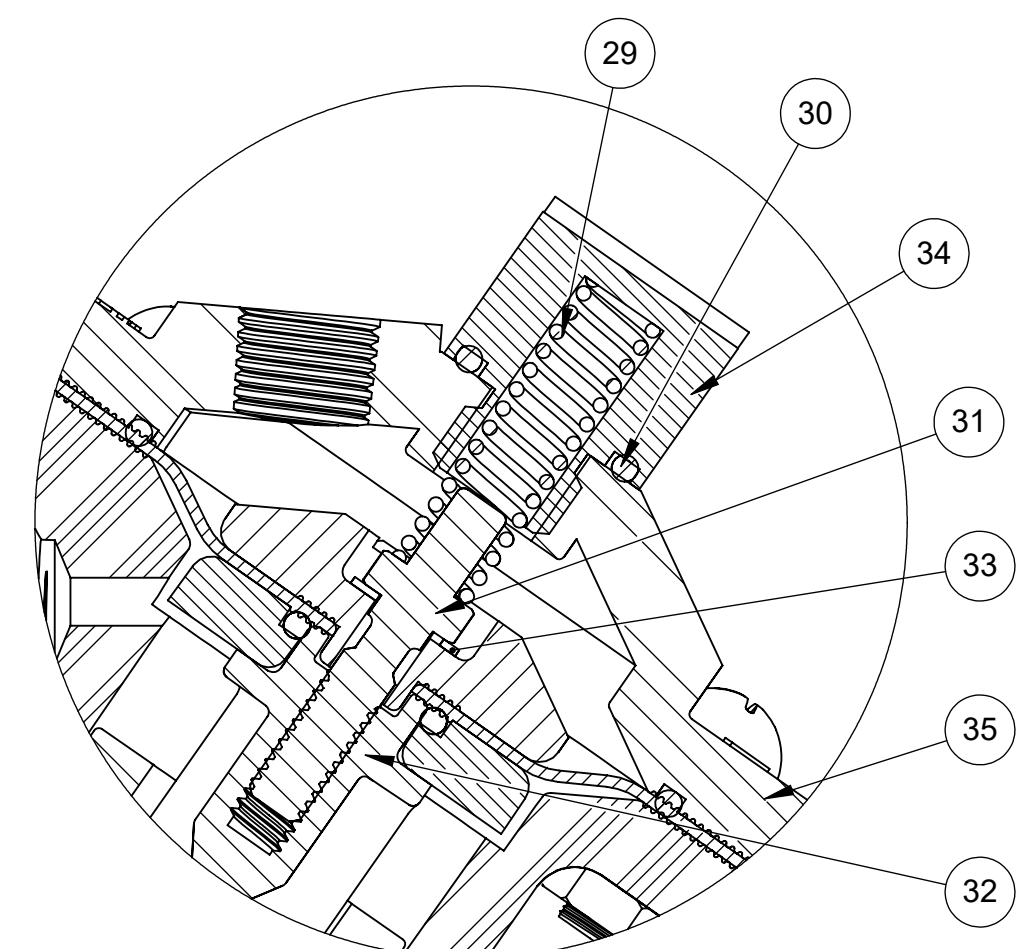
1071082 (K520-X230-14000)
NORMALLY CLOSED

C



1071079 (K520-X221-14000)
POSITION INDICATOR

B



1070143 (K520-X202-14000)
SPRING ASSIST CLOSED

REVISIONS				
ECN	REV.	DESCRIPTION	DATE	APP'D
		SEE SHEET 1 FOR A LIST OF CHANGES		

LIMIT STOP MODEL				
ITEM NO.	DESCRIPTION		PART NUMBER	QTY.
19	LIMIT STOP SCREW, 520	SS	1074988 (520-Y)	1
20	O-RING, 2-010	BUNA	1071667 (ORB-010)	1
21	LIMIT STOP NUT, 520	SS	1074987 (520-X)	1
22	O-RING, 2-013	BUNA	1071669 (ORB-013)	1
23	CAP, LIMIT STOP, 520	NORYL	1074946 (520-BBOK)	1
NORMALLY CLOSED MODEL				
24	MALE PIPE PLUGS, 1/8" NPT	HDPE	1071912 (PLP-0006)	1
25	SHAFT, 520, NC	NORYL	1077905	1
26	SCREW, 520, DIA PLT, NC	SS	1077818	1
27	WASHER, LOCK, INTERNAL, #8	SS	1006351	1
28	DISC SCREW, 520, NC	NORYL	1078324	1
SPRING ASSIST CLOSED MODEL				
29	SPRING, COMPRESSION	SS	1074981 (520-S)	1
30	O-RING, 2-013	BUNA	1071669 (ORB-013)	1
31	SCREW, 520, DIA PLT, SAC	SS	1077828	1
32	SHAFT, 520, NRYL, PI & SAC	NORYL	1077907	1
33	WASHER, LOCK, INTERNAL, #8	SS	1006351	1
34	SPRING RETAINER, 520	SS	1074986 (520-T)	1
35	CAP, LIMIT STOP, 520	NORYL	1074946 (520-BBOK)	1
POSITION INDICATOR MODEL				
36	GUIDE HOUSING, 520	SS	1074970 (520-KB)	1
37	O-RING, 2-106	BUNA	1071687 (ORB-106)	1
38	PLUG, GUIDE HOUSING, 520	SS	1074971 (520-KC)	1
39	SHAFT, 520, PI & SAC	NORYL	1077907	1
40	O-RING, 2-013	BUNA	1071669 (ORB-013)	1
41	SCREW, 520, DIA PLT, PI	SS	1077826	1
42	WASHER, LOCK, INTERNAL, #8	SS	1006351	1

- NOTE:
1. NORMALLY CLOSED CANNOT BE COMBINED WITH SPRING ASSIST CLOSED.
 2. LIMIT STOP MODEL CANNOT BE COMBINED WITH SPRING ASSIST CLOSED OPTION.
 3. POSITION INDICATOR MODEL FURNISHED WITH NORMALLY OPEN, SPRING ASSIST OPEN OPTION ONLY.

- SEE DRAWING 1081309 FOR UNION END CONNECTORS & GROOVED ADAPTORS
- SEE SHEET 1 FOR STANDARD NORMALLY OPEN MODEL

A

CONVERSION KITS	
DESCRIPTION	PART NO.
CONVERSION KIT (LIMIT STOP) CONSISTS OF ITEM NO'S 19 THRU 23	1071056 (K520-LSC)
CONVERSION KIT (SPRING ASSIST CLOSED) CONSISTS OF ITEM NO'S 29 THRU 35	1079602 (K520-SCCN)
CONVERSION KIT (POSITION INDICATOR) CONSISTS OF ITEM NO'S 35 THRU 42	1079599 (K520-PICN)

REPAIR PARTS KIST	
DESCRIPTION	PART NO.
INT. PARTS KIT (LIMITED STOP) CONSIST OF ITEM NO'S 19 THRU 22	1074973 (520-LS)
INT. PARTS KIT (NORM. CLOSED) CONSIST OF ITEM NO'S 4,10,11,25,26,27,28	1079601 (520-RGN)
INT. PARTS KIT (SPRING ASSIST CLOSED) CONSIST OF ITEM NO'S 29 THRU 33	1081789 (520-SCN)
INT. PARTS KIT (POSITION INDICATOR) CONSIST OF ITEM NO'S 36 THRU 42	1081782 (520-PIN)

THIS DOCUMENT IS SOLELY THE PROPERTY OF AQ-MATIC REPRODUCTION, USE DISCLOSURE, OR TRANSMISSION OF THIS DOCUMENT OR DETAILS CONTAINED HEREIN, IN PART OR IN WHOLE, IS PROHIBITED WITHOUT THE WRITTEN CONSENT OF AQ-MATIC ENGINEERING. THIS DOCUMENT AND ANY COPIES SHALL BE RETURNED TO AQ-MATIC UPON WRITTEN REQUEST.

DO NOT SCALE DRAWING. DIMS. ARE IN INCHES [mm]
INTERPRET DIMS AND TOLERANCES PER ASME Y14.5M -1994 UNLESS OTHERWISE SPECIFIED:
CORNER FILLETS R.005-.020 [1.27-.508]
TOLERANCES:
ANGLES: ± 1°
1 PLACE .X: ± .100 [2.54]
2 PLACE .XX: ± .010 [0.25]
3 PLACE .XXX: ± .005 [0.13]

THIRD ANGLE PROJECTION

APPROVALS

DRAWN TRK

CHECKED BY

APPROVED

DATE 11/1/21

THE COMPONENT, PART, OR ASSEMBLY DESCRIBED IN THIS DOCUMENT MUST COMPLY WITH THE EU (EUROPEAN UNION) DIRECTIVE: RoHS DIRECTIVE 2011/65/EC.

Buy AQ Matic.com

CATALOG SHEET, 520, VALVE STANDARD MODEL

SIZE C DWG NO. 1078139 REV. R

SCALE 1:1 SOLIDWORKS FORMAT SHEET 2 OF 2